

# TRIANGLE east

**DINING  
DUETS:**  
Pairing Food  
& Wine

CLAYTON | GARNER | KNIGHTDALE | SELMA | SMITHFIELD | WENDELL | ZEBULON

## HEARTH & HOME

New Ideas in  
Holiday Décor

## THE MEN'S ISSUE

Jeans, Tools &  
Great Musicians

Triangle East, 1401 Aversboro Road, Suite 104, Garner, NC 27529





**ONLINE EXTRA:**  
We've got Biltmore!  
An expert from North  
Carolina's favorite  
home shows how to  
create an elegant  
ribbon wreath  
and offers tips on  
ornament storage, at  
[www.triangleeastmagazine.com](http://www.triangleeastmagazine.com). You'll  
also find a listing of  
local holiday events!


# double

2 designers = 2 unique looks

Jody McLeod's 'Natural Attraction' brings the best of the outdoors in for the holidays. McLeod is owner of Annie V's Florist in Clayton.







It's a 'Cotton Candy Christmas' in this fun design by Randy Barbour, owner of Abbington-Wolfe Florist & Interiors in Smithfield.

# TAKE

WRITTEN BY  
NANCY PARDUE  
PHOTOGRAPHED BY  
JONATHAN FREDIN

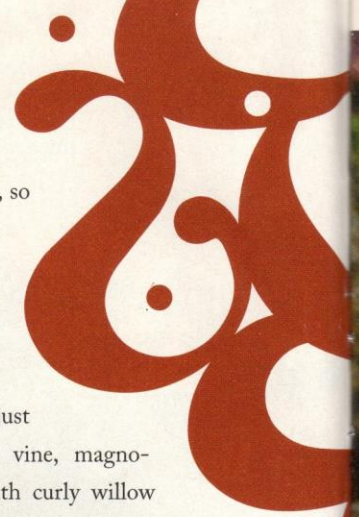
ASK TWO *TRIANGLE EAST* DESIGNERS to decorate the same holiday hearth — then stand back, for the creative results.

"The holidays are about the glitz and glamour," said Randy Barbour, owner of Abbington-Wolfe Florist & Interiors, of Smithfield. "That's what leads into the magic."

Jody McLeod, owner of Annie V's Florist in Clayton, sees it this way: "The holidays are all about friends and family, being connected."

Their two outlooks result in two dramatically different looks, and lots of ideas to liven up your holiday home.





## NATURAL ATTRACTION

### Tips from McLeod:

- **When decorating, start at the top and work down, for easier cleanup.**
- **Save money by having your decorations redesigned by a florist; you just pay labor costs.**
- **Change the produce, change the look: Try grapes, cherries, artichokes and asparagus.**
- **Adding accents: Melt hot glue sticks in an electric fry pan, then dab glue where you need hold.**

### Tips from Barbour:

- **Lights? First check to see how the electricity source fits your design plan.**
- **Take photos so you can re-create your look next year.**
- **The tree doesn't have to be expensive, just provide a green background for decorations.**
- **Buy gift wrap in colors that coordinate with your decorating theme.**

"This look is a composite of mixed media, fresh and silk botanicals," McLeod said. "I like combining the two because the silks on the market today are so real, botanically correct in form, color and scale."

Décor begins with an idea, he says.

"Look at your space, the scale and proportions. Then either stay in them, or be very dramatically out of them," McLeod said. "I do sketches, make an inventory list, then gather plant materials."

Two garlands connected back to back form the base of this look; also try all-magnolia or a red berry garland wrapped around a green one. Magnolia leaves are tucked in last.

"A big mistake people make is not fluffing garlands – you want to make them look as natural as possible," McLeod said.

Winged elm branches laced through the garland create a "sheltering" effect for accessories.

"The trend this holiday is economic," McLeod said, "taking what you have and making the most of it."

"Being from North Carolina, we have so

many natural resources, so it's a great time to take advantage of them. After all, the purpose of the floral industry is to bring nature inside."

This look does just that, featuring smilax vine, magnolia, cedar and pine, with curly willow branches rising from the top.

"You want to see the natural element of the stick, a clean look," he said. "This look appeals to me because everything gets to stand on its own and be seen."

For accents, McLeod uses magnolia pods, pinecones and berries collected in his neighborhood.

Berries paired with fruit can provide affordable impact year-round, he says.

In the bowl, McLeod uses a European design trend, grouping smilax, nandina and cedar for more visual impact.

The grand finale is red glass, warmly lit by floating candles.

"It's nice to see the combination of old and new, the antique double-stack mantel but with this more modern design," McLeod said.

To enjoy the look post-holiday, remove the garland and willow branches and add a low container for the fruit.

"Floral design is very experiential; it's not something you can just read about and apply," McLeod said. "Just try. The more you do it, the more comfortable you become."



### WHERE TO GO

**Abbingdon-Wolfe Florist & Interiors**  
119 N. Third St., Smithfield  
(919) 989-6010  
[www.abbingdonwolfflorist.com](http://www.abbingdonwolfflorist.com)

**Annie V's Florist**  
111 Barbour St., Clayton  
(919) 553-7197  
[www.annievsflorist.com](http://www.annievsflorist.com)

**Rand-Bryan House**  
2518 Benson Road, Garner  
(919) 995-1663  
[www.rand-bryanhhouse.com](http://www.rand-bryanhhouse.com)





## COTTON-CANDY CHRISTMAS

“Christmas is the time to go as crazy as you want. There’s no such thing as too much,” Barbour said.

“Shape and form are the number one thing,” he said. Find shapes you like, then re-create them in your own favorite colors.

First, measure your space and sketch your ideas.

“Then get all your resources together and decide how to secure things. Duct tape and 3M hooks are wonderful if you don’t want to use nails,” Barbour said. Or place a separate piece of wood atop the mantel.

Barbour hangs the “ice” first, for its waterfall effect and to reflect silver, candlelight and the glow of gas logs. (But remember: safety first.)

Wired garland forms a framework for the design. Snow-sprayed cedar branches offer traditional green color, while silver and platinum branches add background sparkle.

Set or wire in heavier items first, Barbour says, such as the mirrored ball. Round and cone shapes keep to the Christmas theme.

For pizzazz, he adds floral picks in various shapes and sizes, and “diamond” ornaments.

“Picks are good because you can put them where you want, and adjust them,” he said. “It’s the same colors, but different textures.”

Use lots of accents, Barbour recommends. Shop early and choose quality.

The zebra fleece represents luxury, he said.

“Furs are really big, and bring in a different look without changing things, like adding a pillow.”

And hugging spray-painted branches is a hot-pink feather boa.

“Include something unexpected, an element of surprise — it draws the eye,” Barbour said, and the look transitions to New Year’s festivities with a few simple adjustments.

Apply similar ideas to your holiday tree, he says: the fleece as tree skirt, picks and boas tucked into branches.

“Have a family tree that’s traditional, that you feel comfortable around, then have fun everywhere else,” Barbour said. “It’s also important to make a spot for those favorite ornaments the kids made, or family heirlooms.

“Don’t be intimidated — stick to three or four colors for your design, then just be willing to try.”

Editor’s note: Special thanks to photo shoot host the historic Rand-Bryan House in Garner, recently opened as a wedding and event venue.

## Drop In. Head Out.

This holiday shop, run errands, prepare for guests, or go to a party while your kids have fun with friends at RightTime KiDS. RightTime KiDS offers convenient, safe, professional, neighborhood childcare for kids 18 months to 12 years old. No contracts, No appointments, No hassle.



Voted #1 Drop-In Childcare  
in the Triangle!

Come check out our featured activities:

- air hockey
- climbing wall
- arcade games
- computers
- table tennis
- karaoke
- Wii games
- movies
- and more...

They have  
**FUN**  
You get things  
**DONE**

Monday – Thursday 8am – 9pm  
Friday 8am – 11pm  
Saturday 10am – 11pm

1411 Aversboro Road  
Aversboro Square Shopping Center  
Garner, NC

**RightTime**  
**KiDS**  
**DROP-IN CHILDCARE**

www.righttimekids.com